

The background of the image is a wide-angle photograph of the Moscow Kremlin. The red brick walls and towers of the Kremlin are prominent, with the Spasskaya Tower on the right. In the background, the golden domes of the Kremlin's cathedrals are visible against a cloudy sky. The Moskva River flows along the left side of the image, and a paved walkway runs alongside the Kremlin walls.

cref[®]

www.crefrussian.ru

Summary

Summary	2
Welcome to CREF	3
Why learn Russian with CREF?	6-7
Russian teaching methods at CREF	8-13
Group lessons	
Individual courses	
Programs for studying and living in Russia	
Business and professional courses for expatriates	
Our school in Moscow	14
Accommodation	15
Cultural activities and excursions	16
Other services	17-18

Welcome to CREF!

Interview with Alexis Parmentier,
director of CREF.

- **First of all, can you tell us what CREF is?**

CREF is a language center which has specialized in teaching Russian in Russia since 1995. We offer language study programs in Russia all year round. CREF is currently based in Moscow, the vibrant capital. If you are interested in a language program which is both rigorous and structured, combined with a living experience for your own pleasure and personal enrichment, we are just the right school for you!

- **In what way are you distinguished from other schools?**

Our clients tell us that they chose CREF because of the level of qualification of its teachers and the quality and design of the courses. I also believe that the teaching tools developed by our CREF Branch of Publication are highly appreciated by our students who are used to learning languages with

communicative and modern methods and so are happy to find them used by us. And finally, the specific atmosphere at CREF is both academic and relaxed at the same time, where professionals from around the world interact, without a doubt this plays a role in the success of our language center.

- **Why is it important to learn Russian?**

Knowing how to speak Russian can be a serious asset for the future! By learning Russian at CREF, you give yourself the chance to communicate directly with the 250 million Russian speakers in the world. Russia is a land of opportunity: remember that Russia plays a major role in the world economy. In addition, when you learn the Russian language you give yourself the chance to discover the richness and multiple facets of the Russian culture.

- **Why is it important to learn Russian in Russia?**


The best way to learn Russian is by immersion: morning lessons,

sightseeing in the afternoon, going out in the evening and at the weekend. This guarantees that you can progress at a very fast rate while at the same time discovering the Russian culture and lifestyle.

- **Lessons, sightseeing, a friendly atmosphere... is that the key to success with CREF?**

I sincerely believe that it is the perfect combination for a successful study program! CREF takes care of everything to ensure you have an unforgettable experience. If you would like to learn Russian, contact us! We will always be delighted to offer you a program which meets your needs.

“Our clients tell us that they choose CREF because of the level of qualification of its teachers and for the quality and design of the courses.”

A photograph of three people in a classroom or meeting room. Two men are seated at a red table on the left, and a woman is seated at a brown table on the right. They are all looking at books or papers. The room has a wooden door in the background and large orange circles on the wall. The woman is wearing a light blue patterned shirt and white pants. The man on the left is wearing a grey sweater over a checkered shirt. The man on the right is wearing a dark blue shirt. There are several books on the tables, including one titled 'A Living Russian Grammar'. A blue speech bubble with white text is overlaid on the image.

“ You will quickly learn how to express yourself in Russian. ”

Why learn Russian with CREF?

- **CREF has been active in Russia for more than 15 years. Each year, we receive more than a thousand students of diverse nationalities.**

We make a special effort to understand the individual needs of our students and ensure their satisfaction. We work with a large team of Russian **teachers who have graduated from some of the best universities in the country**, drawn to CREF by virtue of our reputation. Trained according to our communicative methods, they know how to impart their passion for the Russian language to students!

- We offer a **well-recognized expertise** in the teaching of Russian since CREF also publishes textbooks for learning Russian used all over the world. In addition, we are accredited by the Russian Ministry of Education and Sciences.
- Our state-of-the-art facilities are located in the city center and very easy to access. It's the ideal starting point to discover the splendor of vibrant Moscow.
- We **offer great edibility in the course options**: group courses or individual courses? You can start when you want and for as long as you wish!

We offer different types of courses tailored to the needs of each student: group courses for those who wish to learn Russian in a social and academic setting;

customized individual lessons adapted to the level and objectives of each student.

- All of our Russian courses are based on a communicative approach: above all the aim of this approach is that you can **quickly learn how to express yourself in Russian**, whether it's for day-to-day situations or in your professional life.

- **Many companies and institutions from all around the world already rely on us** to teach their managers Russian (Total, Hermès, BNP Paribas, Yves-Rocher, Danone, Renault, H&M, GDF Suez, Auchan, PSA Group, Shell... in addition the Organization of the United Nations and the embassies of France, Israel, Switzerland, Great Britain, etc.). We are also members of the Franco-Russian Chamber of Commerce, the Russian-British Chamber of Commerce, and the European Association of Russian Business.

- **We take great care in selecting the different accommodations which we offer**: hospitable host families in the city center to help give you a total immersion into the daily life and culture of Russia,

accommodation for you to choose from among those selected with our partners in Moscow. Or, for more restricted budgets, we offer accommodation at youth hostels near the school which are well maintained and offer high standards of comfort. We work in collaboration with professionals from tourist agencies in Russia in order to guarantee you the best possible level of service.

- **Ideal learning environment.** The atmosphere is very friendly and students have access to Wi-Fi and a rest room available all day. A dining area is available to students at our Moscow center. Group classes are limited to 6 students to ensure the fastest rate of progress.

- CREF and its partners allow you not only to discover the timeless grandeur of Russia's famous sights but also to go off the beaten track with the help of our many guided excursions, as well as **different cultural activities which are updated on a regular basis.**



Svetlana Konshina
Supervising professor of the Russian
Departement



Elena Maryna
Teacher



Olessya Polyakova
Teacher



Andrey Shalimov
Teacher



Olga Petrova
Teacher



Svetlana Zaonegina
Teacher



Elena Golotenko
Teacher



Nikolay Lukyanchenko
Teacher



Olga Ivanova
Teacher



Olga Baranova
Teacher



Anna Telenova
Teacher



Irina Chekletova
Teacher

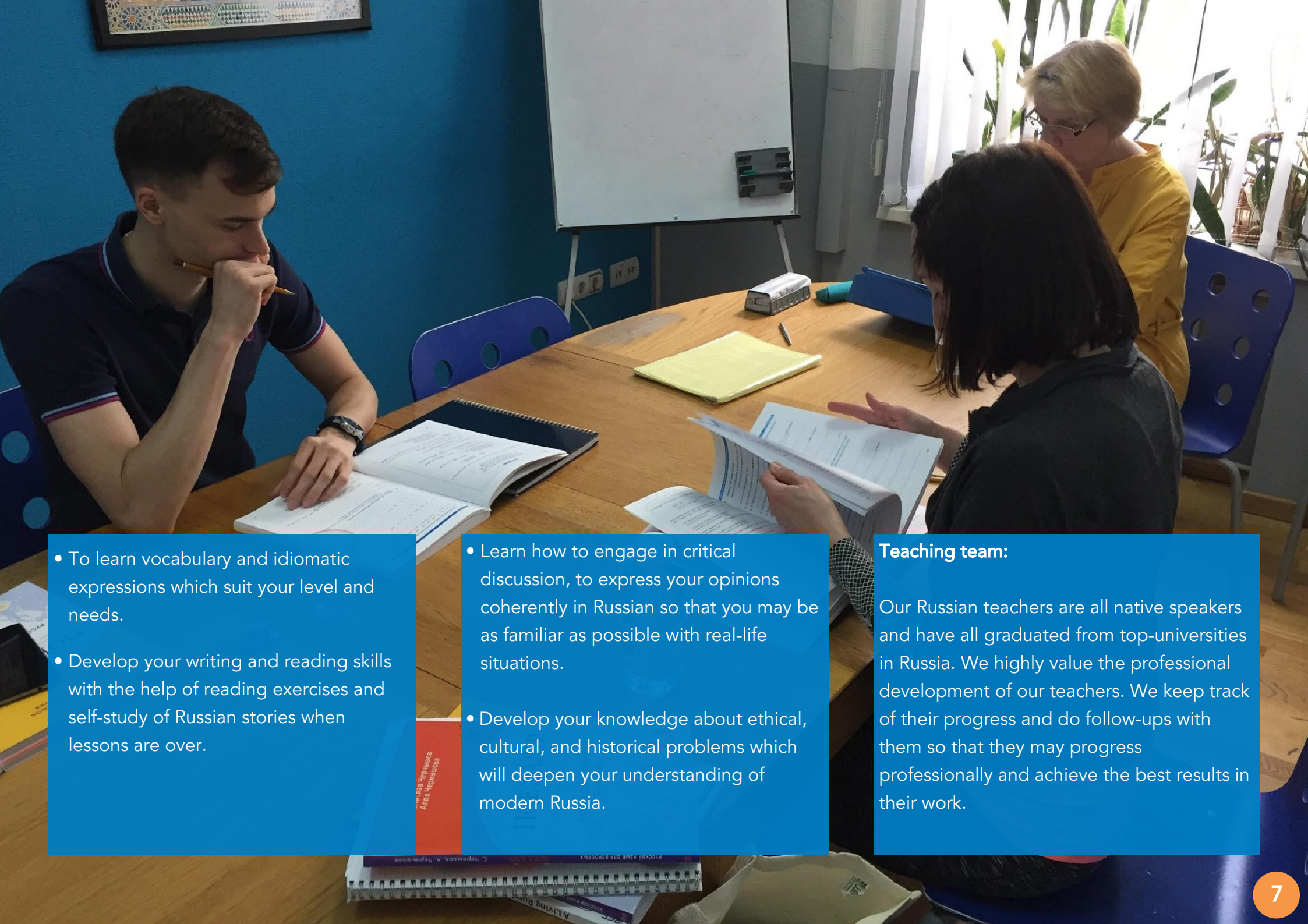
We offer you an effective and straightforward method which allows you to progress quickly. We not only teach grammar you need to know to communicate properly, but also grammar that is actively used and geared towards practical applications, which are connected to everyday life and the business world.

Studying at CREF means that you learn how:

- to communicate in all types of situations, whether it's in your professional life or for day-to-day use.
- to develop your understanding of the language while listening to extracts which are designed for Russian language students and then extracts from actual Russian media (radio, news, etc.).

(continued on next page)

“We highly value the professional development of our teachers.”



- To learn vocabulary and idiomatic expressions which suit your level and needs.
- Develop your writing and reading skills with the help of reading exercises and self-study of Russian stories when lessons are over.

- Learn how to engage in critical discussion, to express your opinions coherently in Russian so that you may be as familiar as possible with real-life situations.
- Develop your knowledge about ethical, cultural, and historical problems which will deepen your understanding of modern Russia.

Teaching team:

Our Russian teachers are all native speakers and have all graduated from top-universities in Russia. We highly value the professional development of our teachers. We keep track of their progress and do follow-ups with them so that they may progress professionally and achieve the best results in their work.

The Regional Centre for French and Russian Studies

A Living Russian Grammar

BEGINNER
INTERMEDIATE

Natalia Bitekhtina
Larissa Grouchevskaia
Ioulia Sheina



Larisa Grushevskaja
Natalia Bitekhtina

A Living Russian Grammar

INTERMEDIATE II

“We offer you a method
which allows you to
progress quickly.”



Russian teaching method at CREF

Level	Description	Lessons	Vocabulary	TRKI equivalent
A1 Beginner	Is able to understand and use common and daily phrases as well as very simple expressions which may be used for real-life needs. Able to introduce him/herself or someone else and be able to ask someone and answer certain basic questions. Able to use simple communication with someone who speaks slowly, distinctly and who is cooperative.	3 x 40 hours	600 words or constructions	ТЭУ (TEU)
A2 Elementary	Is able to understand phrases used out of context and frequently used expressions connected with practical necessities. Able to communicate apart from simple or common usage requiring only the exchange of simple and direct information about everyday topics. Is able to describe in simple terms his/her studies, immediate environment and can bring up topics which are relevant to immediate needs.	3 x 40 hours	Between 1000 and 1500 words or constructions	ТБУ (TBU)
B1 Intermediate	Is able to understand essential points when clear and standard language is used and it is about common topics. Is able to get by in most situations which would be encountered during a trip in a place where the target language is spoken. Is able to talk in simple and coherent language about familiar topics and areas of interest. Is able to talk about a life event, experience or a dream, describe a wish or a goal and share briefly his/her reasons or explanations for a plan or idea.	4 x 40 hours	About 2000 words or construction	ТРКИ-1
B2 Upper-intermediate	Is able to understand essential content about concrete or abstract subjects in a complex text, including a technical discussion about his/her field of work or study. Is able to communicate with a certain amount of spontaneity and ease in such a way that in a conversation with a native speaker is flowing and without any confusion or difficulty for either person. Is able to express him/herself in a clear and detailed manner about a wide range of subjects, articulating an opinion about a current issue and talk about the advantages and disadvantages of different possibilities.	4 x 40 hours <small>For this level, openings for group lessons are on fixed dates; get information from CREF</small>	About 5000 words or construction	ТРКИ-2
C1 Advanced	Is able to understand a wide range of long and difficult texts, as well as grasp the underlying meanings. Is able to express him/herself spontaneously and fluently without any obvious need to search for the right words. Is able to use the language smoothly and effectively in their social life, professional or academic. Is able to express thoughts about complex subject matter with complete clarity and well-structured language and demonstrate their command of discourse through their organization, articulation and cohesion.	Individual courses only	About 6000 words or construction	ТРКИ-3
C2 Fluent	Is able to understand practically without any effort everything he/she hears. Is able to reconstruct the facts and arguments from various written/spoken sources by summarizing them coherently. Is able to express him/herself spontaneously, very fluently and precisely and can distinguish nuances of meaning found in complex subject matter.	Individual courses only		

“The instruction will be concentrated in the areas where you wish to improve your skills.”



Russian teaching method at CREF

Group lessons:

For a more sociable and interactive environment, you should choose to have group lessons. At the rate of four Russian lessons a day, five days a week, in total 20 hours of lessons per week, you will progress very quickly.

We guarantee you :

- Small-sized groups. So that everyone has enough opportunity to speak and practice their speaking skills, group sizes are limited to 6 people, sometimes less. All groups are made up of students from the same level. Students are assigned to a level according to the results of their assessment test.
- Ongoing assessments which allows you to track your progress. You can complete level A1 in 80 hours (4 weeks of lessons) and, if you are a total beginner from the moment you arrive in Russia. You can complete level A2, in about 160 hours.

- A course centered on communication. Starting from your first Russian lessons at CREF, whatever your level is, you will be engaged in communication, biased towards speaking more than writing. Grammar won't be overlooked of course, but it will be dealt with as a tool to help you in your communication and comprehension skills.
- Instruction and individual monitoring by rigorous and proficient teachers, even in group lessons.
- Exclusive teaching material developed by our teachers at CREF especially for Russian as a foreign language.

Our individual courses:

Do you have specific restrictions, a busy schedule or personal obligations which make certain demands of your time? Or do you simply wish to learn Russian at your own pace?

You should consider choosing individual courses. Whether you want content which is intensive, more in depth, or perhaps with less grammar, or more writing, more speaking practice... You decide your own program with our program manager and your language course in Russia can be done at your own pace.

What we guarantee :

- Ongoing assessments which allows you to track your progress.
- Your progress will be faster than in group lessons; the teacher is devoted 100% to your needs and concentrates on your specific difficulties . You can therefore expect to reach your objectives faster.

- A course centered on communication and/or grammar: depending on your priorities and in consultation with you, the instruction will be channeled into the areas where you wish to improve your skills.
- Exclusive teaching material developed by our teachers at CREF, which can be adapted according to your particular needs.
- All the courses are adapted by the teachers to suit the needs of each student. You will be asked to specify for us your main areas of interest so that that the course may be adapted accordingly.
- The number of lessons you want and the schedules are completely edible. Our teachers can even come to your home or workplace if you are unable to come to CREF.

Russian teaching method at CREF

School trips and personalized holidays:

Would you like to arrange a program for a group of high-school students, college students, colleagues or friends?

CREF helps you to put together a trip from a list of different options: from courses, accommodation, cultural programs, all of which we adapt to your needs and budget to ensure you have a fulfilling stay!

What we guarantee:

- An organized stay based around your preferences: more language study or cultural excursions and discovering the heart of Russia, it's all for you to decide.
- Budget restrictions are taken into account: our array of courses are wide enough that we know how to meet your needs.
- We can assure you of the highest quality courses thanks to the well- recognized standards of CREF and a cultural program that is enriching and wide-ranging with the help of partners who specialize in Russian tourism.

Business & Professional Russian Language Courses:

Teaching Russian to foreign managers and their families living in Russia is at the core of CREF's program and we have put in place programs which are especially designed for them. A large number of companies already rely on us to provide lessons for their managers.

What we guarantee:

- CREF offers you a lesson schedule specifically arranged according to your work schedule, morning, evening or weekend. Our teachers can come to your workplace to have lessons with you.
- CREF offers courses for all ages: for expatriates, their spouses and children.
- The course content is adapted to your needs. We offer you a method that is effective and easy to use so that material which may seem challenging now will soon be completely clear to you!

- CREF offers you course programs adapted to your schedule and obligations: Intensive Russian group lessons (20 hours per week) or standard (4 hours per week) and individual Russian lessons.
- Courses can be paid for by your company which are then deductible from your taxes.

“Our teachers can come to your workplace to do lessons with you.”





Our school in Moscow

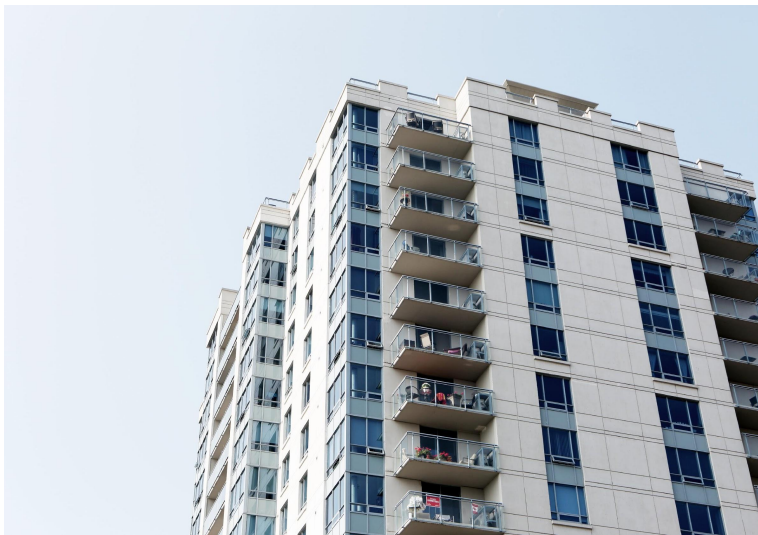
People say that Moscow never sleeps. Find out for yourself! Come and live in the ever-changing landscape of Russia: during your language course & cultural program, discover all at once Moscow of past and present.

In the shadows of the Kremlin, the city arose from Soviet torpor, and is experiencing a new golden age. Moscow is at the same time in the centuries-old domes of St. Basil's, ultra-modern skyscrapers as well as historical ones built during the Soviet era, and the immense shopping malls (Moscow has the largest shopping space of any European city) and the countless trendy venues for a night out! There's always something going on in Moscow at any time of day or night.

CREF uses 11 classrooms comfortably furnished.

Every room is equipped with audio- visual material, and with internet access available for the teacher. Rest rooms are provided, along with a dining area, a reading room with workstations available, and free Wi- Fi access for our students. CREF Language Center is located right in the city center, next to Lubyanka square, and within a 10 minutes walking-distance from Red Square. You can get to CREF from the metro stations "Lubyanka", "Chistye Prudy" or "Turgenevskaya".

Accommodation



Renting an apartment:

Alone, with a family, or with a roommate then why not opt for total freedom by choosing from our selection of apartments? You will make the most of your language study program by discovering Russian city life as those who live there. In Moscow, the apartments we offer are located in the heart of the city, satisfying our strict criteria of security, cleanliness and convenience.



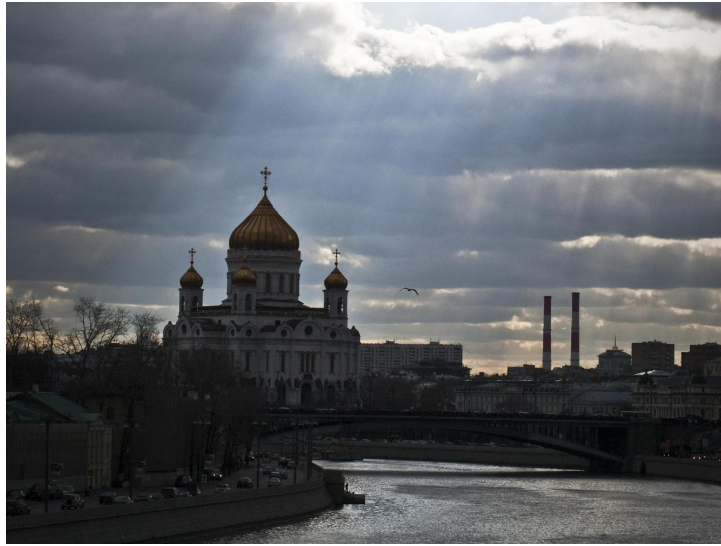
Live with a local family:

Do you want to continue practicing Russian after your lessons? Do you want to learn the local way of life and do you dream of seeing the Russia which is unknown to tourists? You should choose to live with a local family. Your language program will be greatly enhanced this way.

In Moscow, our host families are selected according to high criteria standards which will be fully satisfying to you. They will help you integrate into Russian society which is far from tourist destinations.

Living with a Russian family is the best way to supplement your Russian lessons and apply what you learn during the day into real-life situations. This way you are truly practicing Russian 24 hours a day, even at the weekend.

Cultural activities and excursions




CREF Language Center, in partnership with Tsar Voyages, offers cultural excursions and sightseeing tours in Moscow

In Moscow, you will certainly visit the Pushkin Museum, Kremlin, or Tretyakov Gallery. You might also choose to go on a trip to the monastery at Sergeyev Possad, or if you are staying between April and September, you might take a boat-trip along the Moskva river.

In addition, we offer long weekend all-in trips to St. Petersburg so that your discovery of Russia is complete.

What we guarantee :

- Quality excursions which will enrich your appreciation of the Russian culture.
- Weekly travel information, so that you won't miss what could be the most interesting part of your stay.
- Excursions can be paid to CREF each week; you don't have to decide on any excursions when you initially sign up for your program.

A blue spiral-bound notebook is open, showing a page with a light blue grid pattern. A green pen with a silver tip and clip is lying diagonally across the page. In the top right corner, there is a blue rounded rectangle containing a quote in white text. The background is a solid light blue.

“ CREF offers you a wide range of services which will make your journey to Russia and your stay much easier. ”

While getting ready for your study program in Russia, you need additional services: a visa, airport transfer to your accommodation, or organization of travels within Russia. How is this possible if you don't speak Russian yet and aren't there on the spot ?

CREF offers you a wide range of services which will make your journey to Russia and your stay much more easier and comfortable.

- **Invitation, Entry Visa to come to Russia**

CREF takes care of everything for you, so you can receive an official letter of invitation, which is necessary to obtain a Russian visa.

After you receive the letter of invitation, you will then get your visa yourself through the Russian Consulate nearest to you or through a specialized agency.

In Russia, you are required to register with the department for foreigners (OVIR) and to declare the length of your stay.

- **Transport from the airport or train station**

A representative of CREF can greet you at the airport or at the train station and drive you to your place of residence. For your departure, a driver can be dispatched to take you to the airport.

- **Reserving train tickets and flights within Russia**

CREF can reserve train or airline tickets for any destination in Russia or neighboring countries. Do not hesitate to ask us if you would like to extend your language program by turning it into a tourist stay while discovering Russia.





NOTES:

Ulitsa Malaya Lubianka 16, 2nd entry, 3rd floor · Moscow
russian@cref.ru
www.crefrussian.ru